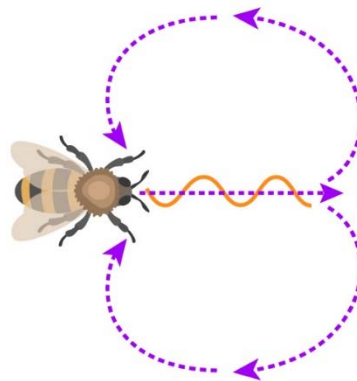
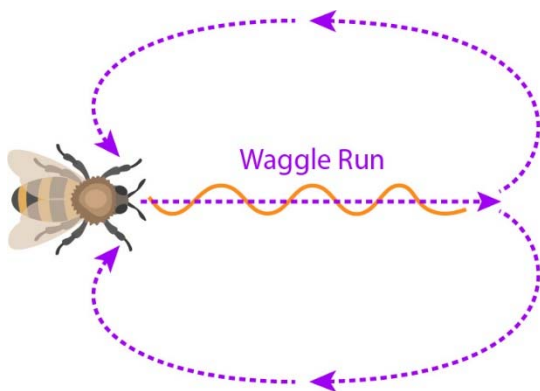




World Bee Day

Colony bees work as a team to find delicious food. When they find the best patch of flowers, they need to go back and direct the rest of the colony to that spot. They communicate through “the bee waggle dance”.



Which dance do you think indicates flowers that are further away?

Answer: Left

The bees use angles between them and the sun, or them and the hive to show direction. Through this dance they can indicate distance, direction, and sometimes quality of the flower patch.

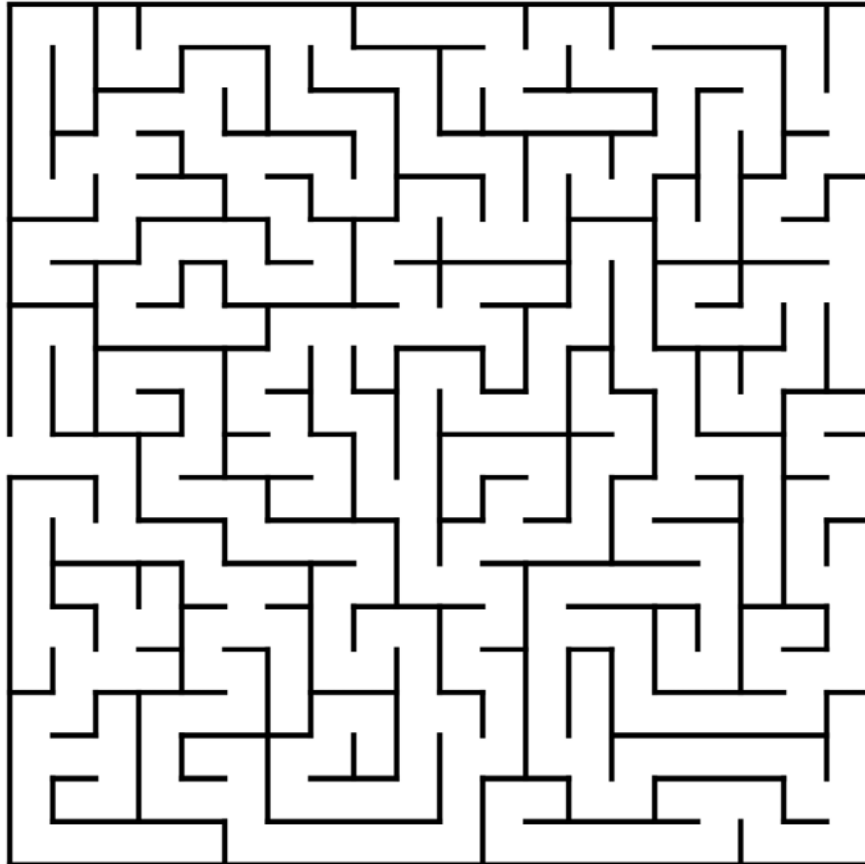
If the patch is close, the bee only circles, and the amount of waggle before they switch directions indicates quality.



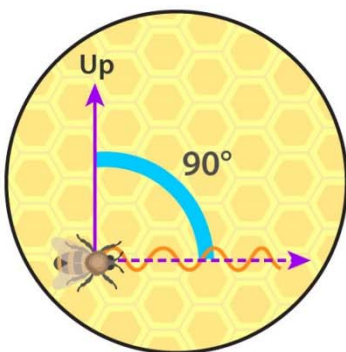


World Bee Day

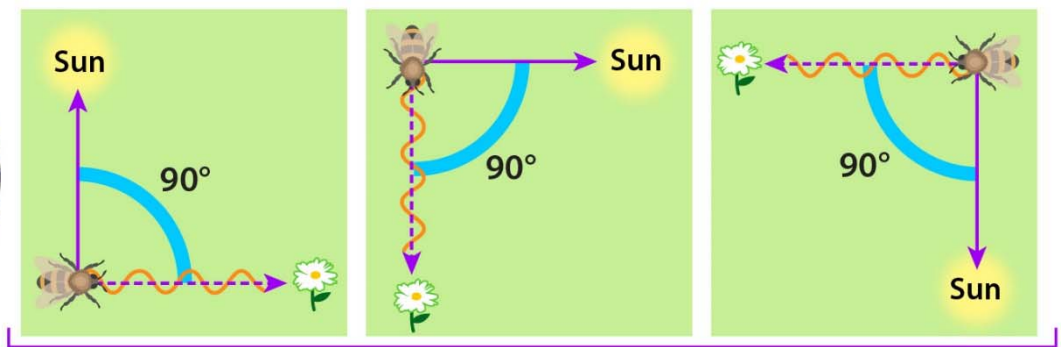
Do the Bee Dance!
Find your way to this flower patch.
Then create a dance and show how
you would waggle like a bee!



YUM!



Inside the hive



Outside the hive (top view)